

KEY

- ⊗ LARGE EVERGREEN SHRUB OR SMALL EVERGREEN TREE
- ⊙ LARGE DECIDUOUS SHRUB OR SMALL DECIDUOUS TREE
- ⊗ NATIVE FLOWERING TREE
- ⊙ BENCHMARK

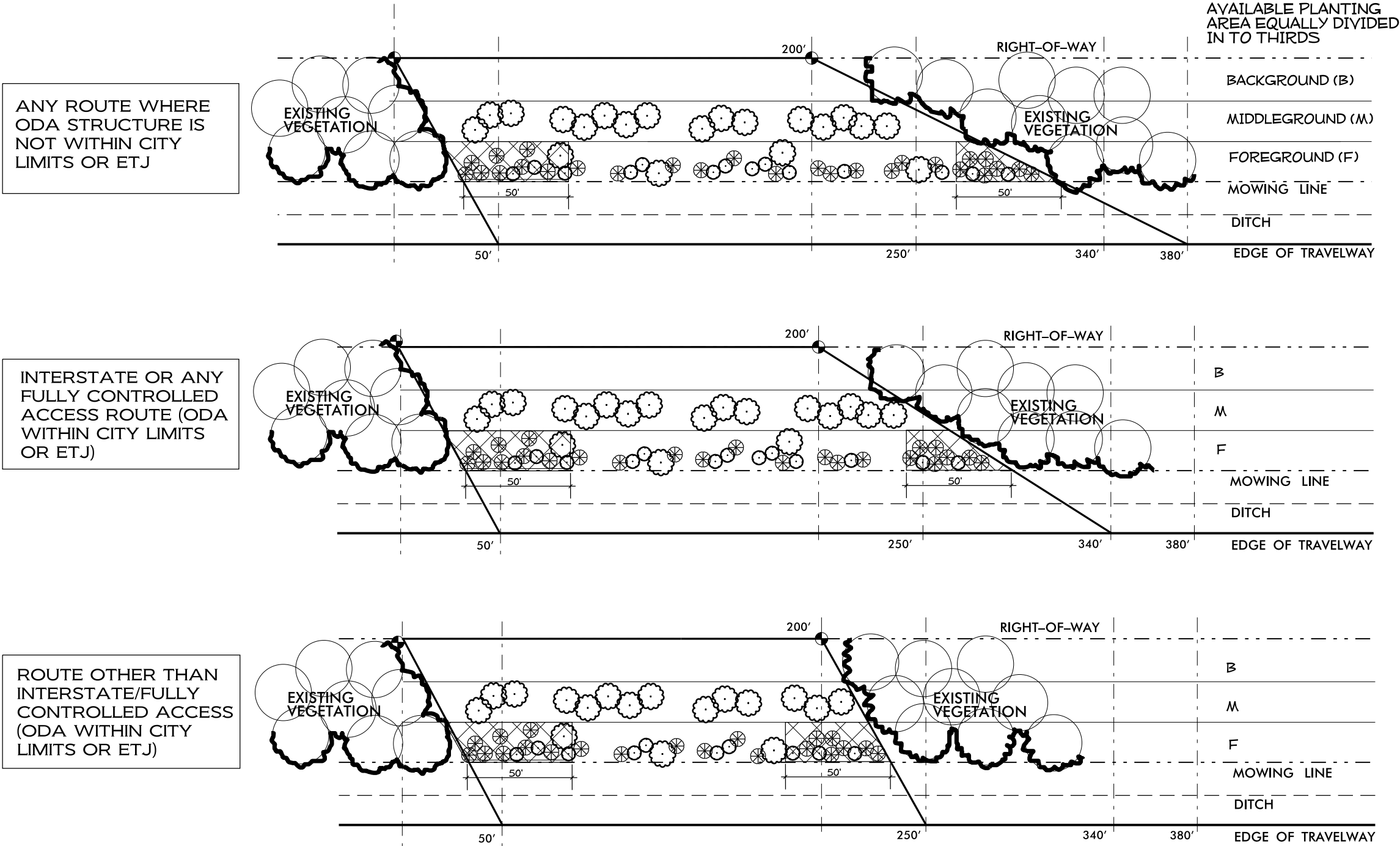
PLANTING ZONES

- FOREGROUND (F):
- VEGETATIVE BUFFER OF SHRUBS AND TREES ARRANGED IN A NATURAL PLANTING PATTERN.
 - 50' TRANSITION AREA ON EDGES WITH GREATER PLANTING DENSITY.
- MIDDLEGROUND (M):
- PLANTINGS OF NATIVE FLOWERING TREES PROVIDING A BACKDROP TO THE FOREGROUND VEGETATION AND ADDING SEASONAL COLOR; MASSED IN GROUPS OF 3 OR 5.
- BACKGROUND (B):
- AREA LEFT TO NATURALIZE.

NOTES

- * USE REGIONALLY SITE APPROPRIATE PLANTS PER NCDOT APPROVAL; SEE CORRESPONDING PLANT LISTS.
- * WIDTH OF VEGETATIVE AREA WILL VARY.
- * WHERE AVAILABLE PLANTING AREA WIDTH IS 20' OR LESS FROM CLEAR ZONE TO RW LINE, AN APPROPRIATE MIXTURE OF MIDDLEGROUND AND FOREGROUND PLANTINGS WILL BE REQUIRED.
- * ACTUAL PLANTING DESIGN MAY BE ADJUSTED AS NEEDED.

ODA TYPICAL PLANTING SCHEMATIC- CUT SLOPE



PLANS NOT TO SCALE